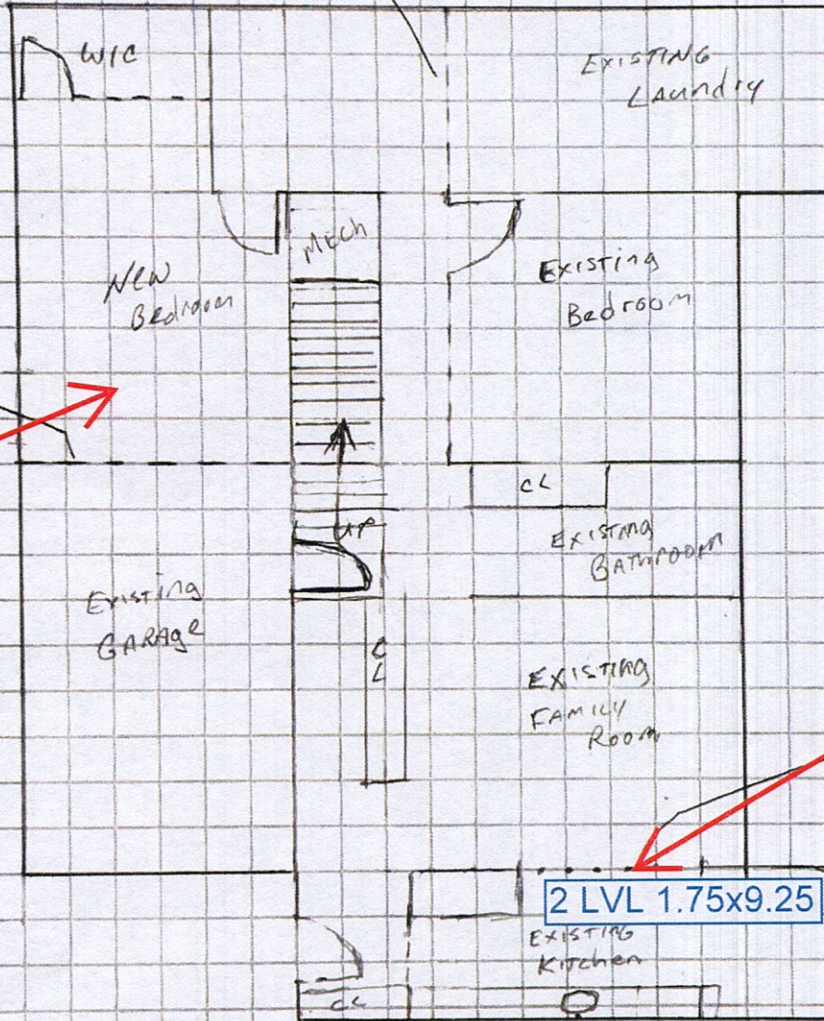


640 E. McMurray Rd
McMurray, PA 15317

First Floor
Revised Plan

NEW INTERIOR WALL
- 2" x 4"
- 16" OC



See Detail
1B

See Detail 1A

2 LVL 1.75x9.25

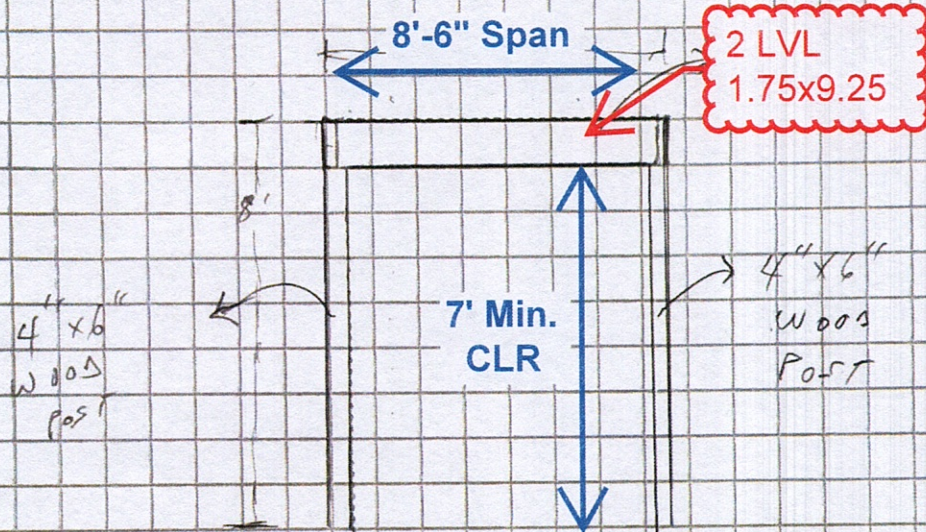
- - - New
- Existing
- · · · Remove



[Handwritten signature]
8/24/2023

640 E. McMurray Rd
McMurray, PA 15317

First Floor Detail 1A



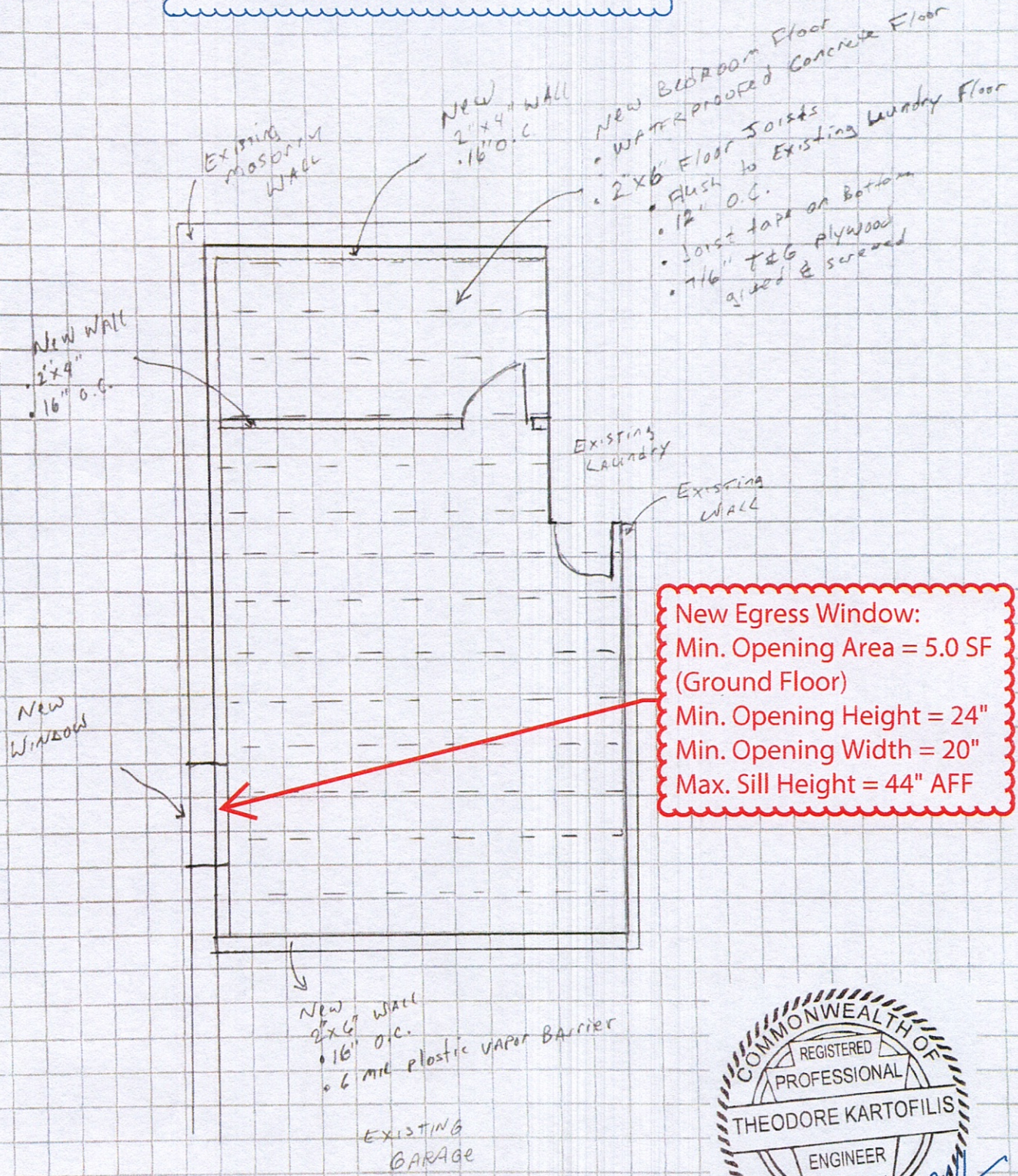
[Handwritten Signature]
8/24/2023

640 E. McMurray Rd
McMurray, PA 15317

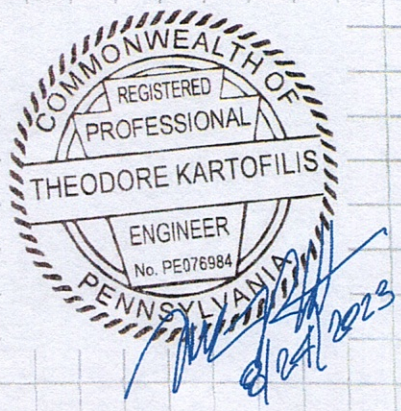
First Floor Detail 1B
New Bedroom

13

50
X

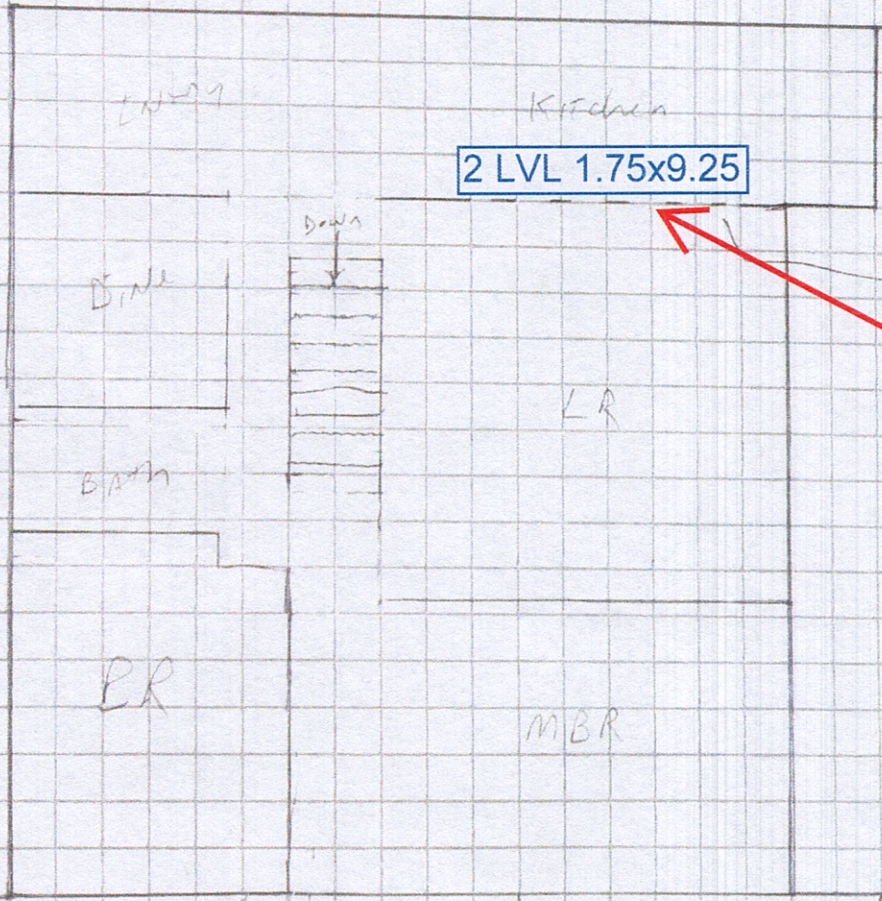


New Egress Window:
Min. Opening Area = 5.0 SF
(Ground Floor)
Min. Opening Height = 24"
Min. Opening Width = 20"
Max. Sill Height = 44" AFF



640 E. McMurray Rd
McMurray, PA 15317

Second Floor
Revised Plan

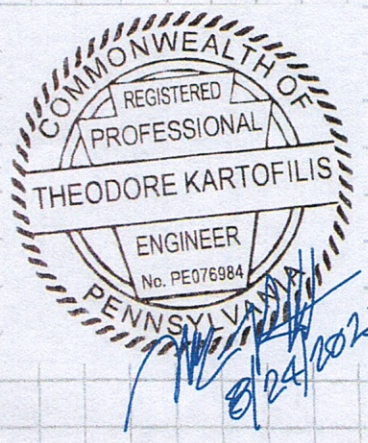


See Detail 2A

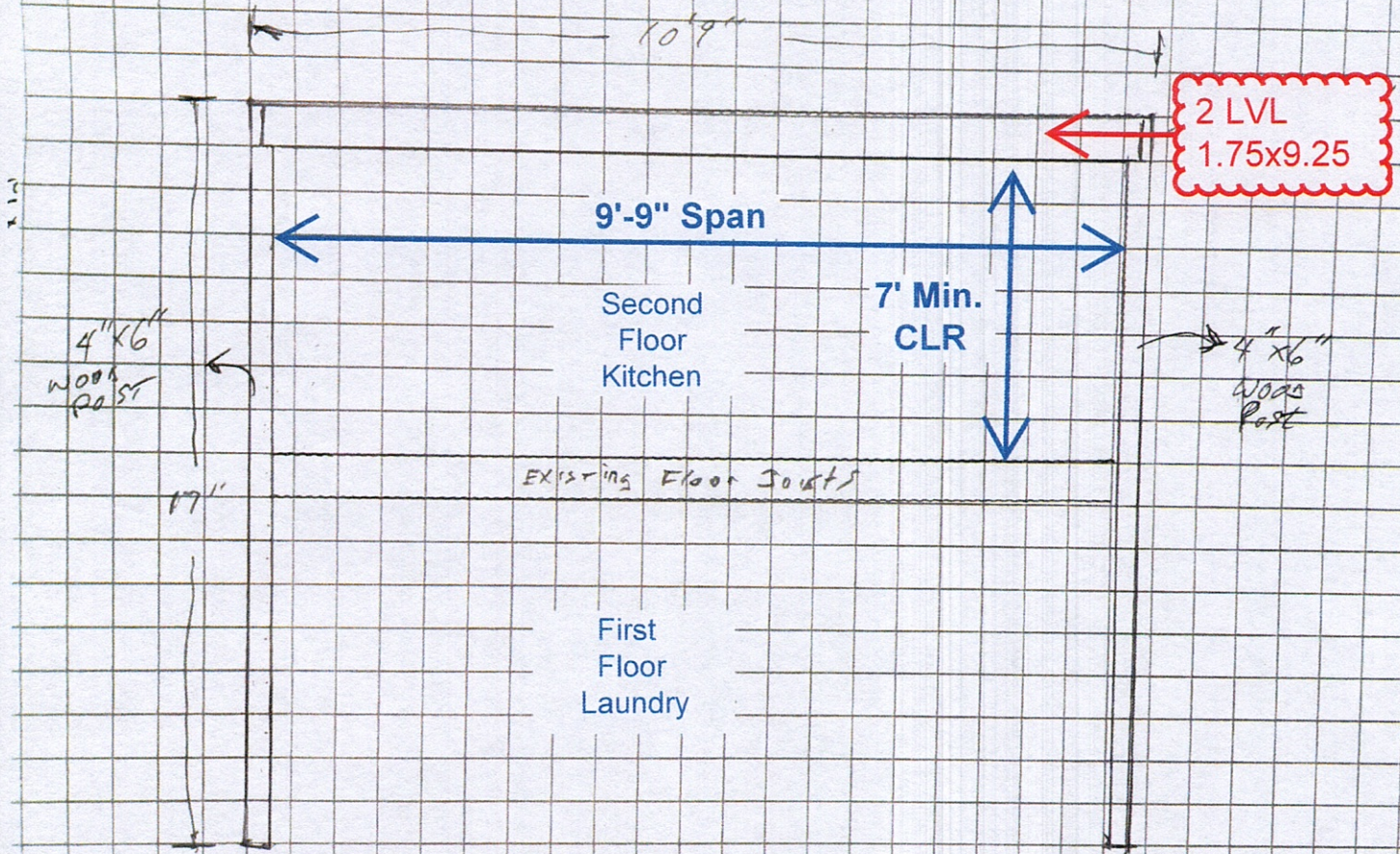
CL BATH CL

NEW
interior
WALL
- 2x4"
- 16 OC

new interior
WALL
- 2x4"
- 16 OC



640 E. McMurray Rd
McMurray, PA 15317
Second Floor Detail 2A



Creehan
Sheet 5 of 6

